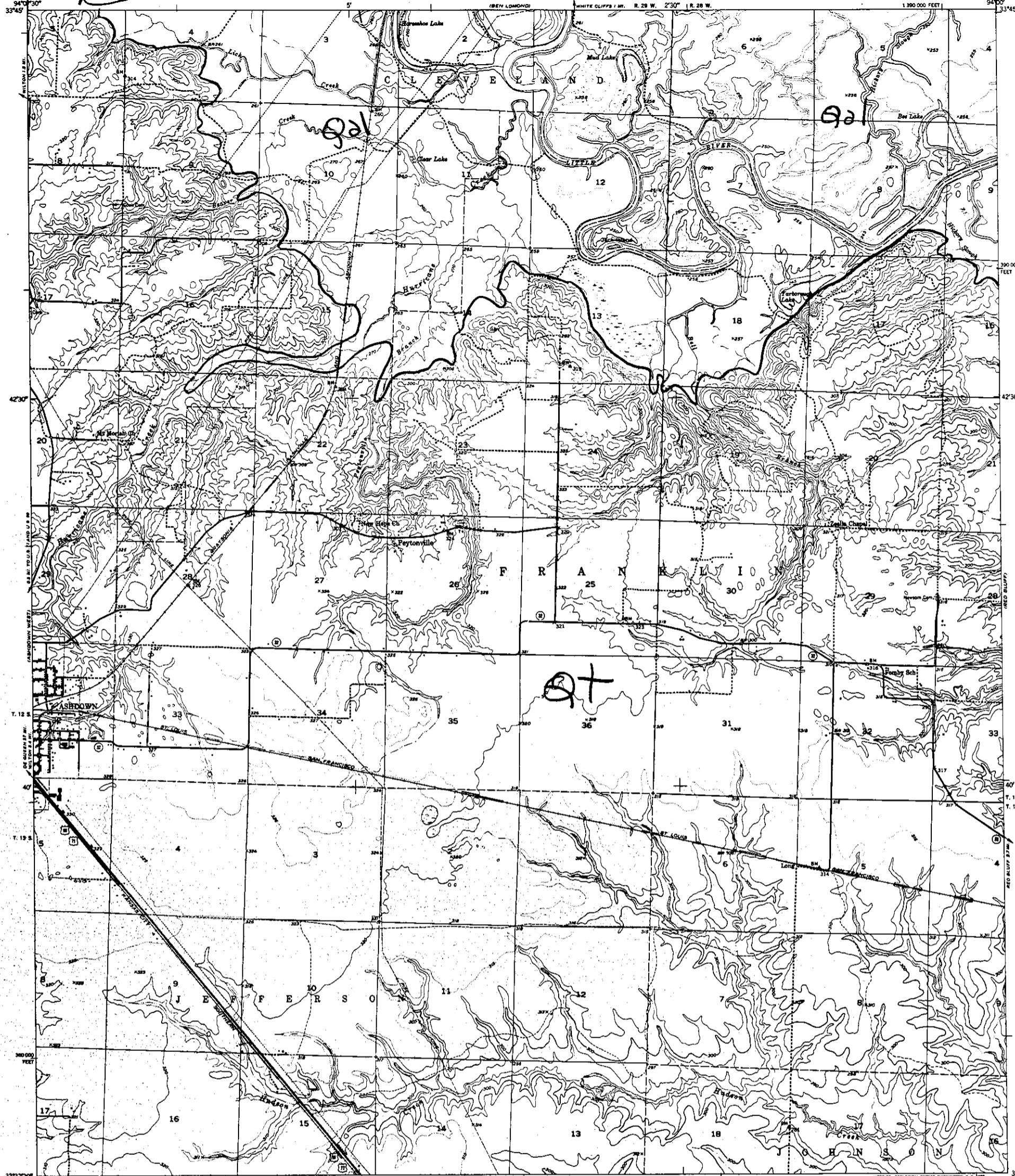
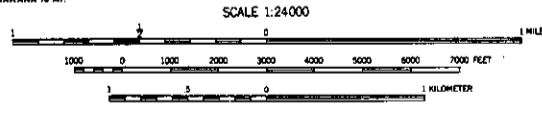


Reduce this line to this line



Mapped, edited, and published by the Geological Survey
Control by USGS, USC&GS, and USCE
Culture and drainage in part compiled from
aerial photographs taken 1949
Topography by plane-table methods 1950
Polyconic projection, 1927 North American datum
10,000-foot grid based on Arkansas coordinate system,
south zone



CONTOUR INTERVAL 10 FEET
DOTTED LINES REPRESENT HALF-INTERNAL CONTOURS
DATUM IS MEAN SEA LEVEL

ROAD CLASSIFICATION	
Heavy-duty	Light duty
Medium-duty	Unimproved dirt
U. S. Route	State Route

ASHDOWN EAST, ARK.
N3337.5-W9400/7.5
1950

THIS MAP COMPLIES WITH NATIONAL MAP ACCURACY STANDARDS
FOR SALE BY U. S. GEOLOGICAL SURVEY, FEDERAL CENTER, DENVER, COLORADO OR WASHINGTON 25, D. C.
AND BY THE ARKANSAS RESOURCES AND DEVELOPMENT COMMISSION, LITTLE ROCK, ARKANSAS
A FOLDER DESCRIBING TOPOGRAPHIC MAPS AND SYMBOLS IS AVAILABLE ON REQUEST

Clardy-Bush

MASTER COPY